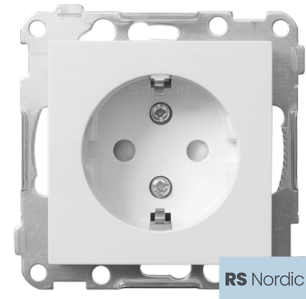




## Data Sheet 1540140

**Product:** RS SSO Schuko c-plate screw pure white  
**EI-number:** 1540140  
**Mat.no:** EKO30118  
**EAN:** 27020161301188  
**Packing:** 5  
**Color:**



### Product description:

RS Nordic flush type single socket-outlets with shutters - to be fixed with combination plates. Cover plate made of thermoplastic and with diameter 56x56mm - constructed to fit into all ELKO combination plates. Single socket-outlets designed for combination plates are always equipped with shutters under the cover-plate. Steel mounting ring. Combinationplate must be ordered separately.

RS Nordic is produced in a color resistant material in purewhite RAL9003 color with the well known RS design.

### Technical specifications:

Voltage: 16A / 250VAC.

With earth.

Single flush mounted with centralplate.

Fit into all RS Nordic combination plate.

Colour: Purewhite RAL9003.

Halogenfree.

Delivered with shutters

Mounting: Single, 1,5 or double flush box or 33mm single surface housing

Halogenfree.

Degree of protection: IP20

Screw terminals

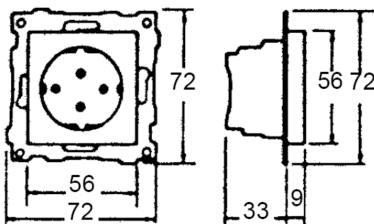
C-C distance: 60mm

Depth: 32mm

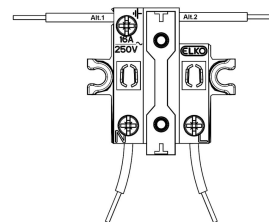
Maximum torque: 1,2Nm (According to IEC 62196-1)

Maximum cross section: 4mm<sup>2</sup>

### Size



### Wiring diagram



### ELKO AS

E-mail: [elko@elko.no](mailto:elko@elko.no)  
Internet: [www.elko.no](http://www.elko.no)  
Bank: 6219.05.15880  
Org.no.: NO 911 382 563 MVA

ELKO Front office  
Sandstuveien 68, NO-0680 Oslo  
P.O.Box 6598 Etterstad, NO-0607 Oslo  
Tel.: +47 67 80 73 00  
Fax: +47 67 80 73 01

ELKO Plant  
Sporvind Industriområde, NO-3340 Åmot  
Tel.: +47 32 78 91 00  
Fax: +47 32 78 91 01