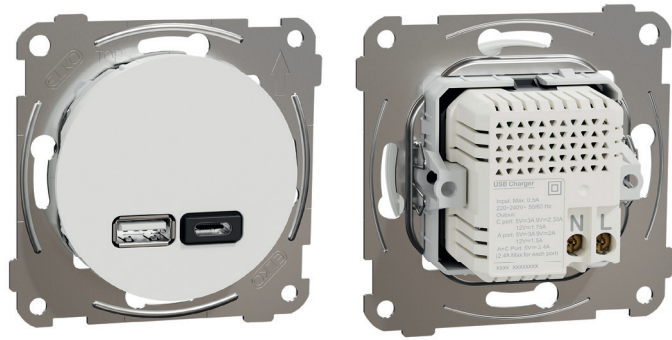


Data Sheet EKO50089

Product:	USB charger type A+C PD
E-number NO:	66 300 83
E-number SV:	52 005 74
E-number FI:	70 058 69
EAN:	7020160500892
Packing:	1
Color:	Pure white



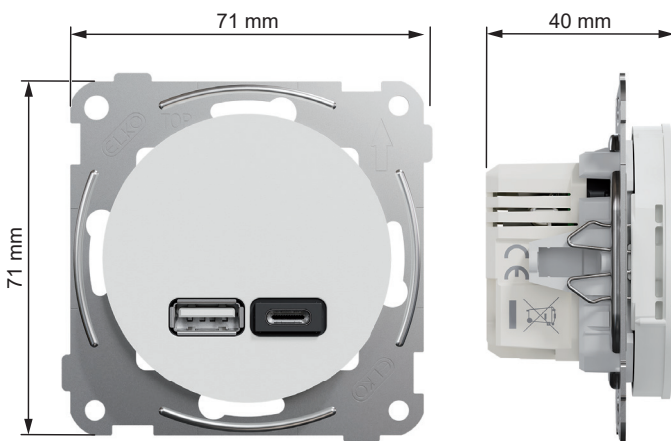
Product description: ELKO One USB charger is a USB A+C type with Power Delivery and Programmable Power Supply (PPS) for optimized charging and long life battery. Its Ue rated operational voltage is 220-240VAC at 50/60 Hz. To be mounted in suitable 1 to 5 gang cover frame for flush cc 60mm wall-box installation or 1 to 3 gang high surface mounted box for surface installation, as well as in corner box. The dimensions of the product are (W) 71mm x (H) 71mm x (D) 40mm. It is made of Thermoplastic. The color of the product is pure white (RAL 9003) with matt surface finish. It reaches IP20 degrees of protection.

One range by ELKO is covering Wiring Devices, Stand Alone Electronics and Network Connectivity functions for both flush as well as surface installation. The One range has been developed with sustainability in mind, using recycled plastic and recycled packaging material. Modern and slim design with a smooth matt surface finish that is reflecting the light in a glowing way due to it's shape.

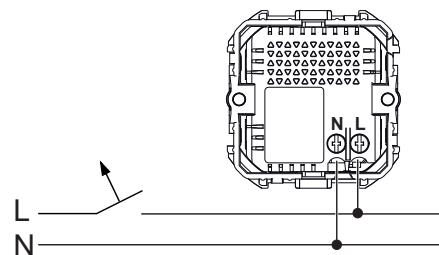
Technical specifications: Nominal input voltage: 220-240 V~, 50/60 Hz
 USB output (type C): 5.0 V=3.0 A 15.0 W, 9.0 V=2.33 A 21.0 W, 12.0 V=1.75 A 21.0 W
 5.0 V-12.0 V = 0.1 A-3.0 A Max 21.0 W
 USB output (type A): 5.0 V=3.0 A 15.0 W, 9.0 V=2.0 A 18.0 W, 12.0 V=1.5 A 18.0 W
 Maximum output power (type A + type C): Max. 5.0 V=3.4 A 17.0 W (Max 2.4 A for each port)
 Charger protocol: PD 3.1 with PPS and further modes
 Expected lifetime: 30 000 h with output power 21.0 W by 25 °C
 Overvoltage category: OVC III
 Class of equipment: Class II
 Protection: -Output over current
 -Output over voltage
 -Output short circuit
 -Over temperature protection with automatic power adjustment

16 A circuit breaker (10 A circuit breaker if a terminal is used for looping)
 Average active efficiency: > 86.2 %
 Efficiency at low load (10%): > 76.2 %
 No-load power consumption: < 0.05 W (in stand-by)

Dimensions



Wiring diagram



⚠️ DANGER

HAZARD OF ELECTRIC SHOCK, EXPLOSION, OR ARC FLASH
 The product must be installed and connected by a qualified electrician. A qualified electrician must demonstrate an in-depth knowledge of:

- Construction of electrical installations in buildings in accordance with IEC 60364
- Additional safety standards, local connection rules, and building regulations
- Standardized tools and measuring equipment

Failure to follow these instructions will result in death or serious injury.