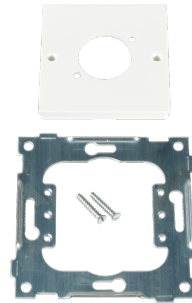




Data Sheet 6942604

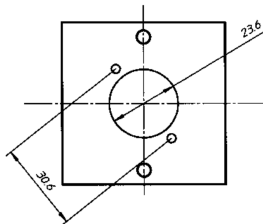
Product: L433/74 1xXLR d-type PH
EI-number: 6942604
Mat.no: EKO09225
EAN: 7020160922519
Packing: 10
Color: Polarwhite



Product description: RS16 centralplate with cutout for 1 x XLR D-type outlet. Delivered with 2 screws, made of thermoplastic, fits into all RS16 combinationplates, Inclusive a steel mounting ring fitted for flush mounted boxes with screwdistance cc 60 mm. Combinationplates to be ordered separately

Technical specifications: ELKO RS16 single centralplate with cutout for 1 x XLR D-type outlet
Color: Polarwhite
Halogenfree
56x56mm
Cutout size: 23,6 mm
Mounting distance for outlet: 30,6mm.

Size



Wiring diagram

ELKO AS

E-mail: elko@elko.no
Internet: www.elko.no
Bank: 6219.05.15880
Org.no.: NO 911 382 563 MVA

ELKO Front office
Sandstuveien 68, NO-0680 Oslo
P.O.Box 6598 Etterstad, NO-0607 Oslo
Tel.: +47 67 80 73 00
Fax: +47 67 80 73 01

ELKO Plant
Sporvind Industriområde, NO-3340 Åmot
Tel.: +47 32 78 91 00
Fax: +47 32 78 91 01