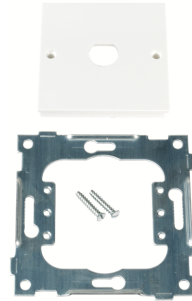




## Data Sheet 6941553

**Product:** L433/3 1XBNC 12,5mm PH  
**El-number:** 6941553  
**Mat.no:** EKO09079  
**EAN:** 7020160907912  
**Packing:** 10  
**Color:** Polarwhite



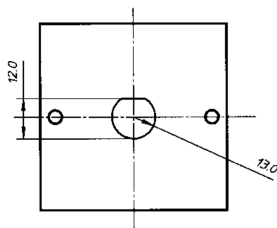
**Product description:** RS16 centralplate with cutout for BNC 12,5mm. Delivered with 2 screws, made of thermoplastic, fits into all RS16 combinationplates, Inclusive a steel mounting ring fitted for flush mounted boxes with screwdistance cc 60 mm. Combinationplates to be ordered separately

---

**Technical specifications:** ELKO RS16 single centralplate with cutout for BNC 12,5 mm.  
Color: Polarwhite  
Halogenfree  
56x56mm  
Cutout size: 12,5mm

---

Size



Wiring diagram

### ELKO AS

E-mail: [elko@elko.no](mailto:elko@elko.no)  
Internet: [www.elko.no](http://www.elko.no)  
Bank: 6219.05.15880  
Org.no.: NO 911 382 563 MVA

ELKO Front office  
Sandstuveien 68, NO-0680 Oslo  
P.O.Box 6598 Etterstad, NO-0607 Oslo  
Tel.: +47 67 80 73 00  
Fax: +47 67 80 73 01

ELKO Plant  
Sporvind Industriområde, NO-3340 Åmot  
Tel.: +47 32 78 91 00  
Fax: +47 32 78 91 01