



Data Sheet 1410752

Product: Plus dimmer 630GLE PH
EI-number: 1410752
Mat.no: EKO03756
EAN: 7020160375612
Packing: 1
Color: Polarwhite



Product description: 630GLE dimmer for ohmic, 230V halogen, or electronic trafo. On/Off by pushing the button, dim by turning knob
The dimmer can be remote operated by a two way switch (6).

The dimmer can be surface mounted in a combination with a surface box 33mm deep. If the dimmer is installed in a combination frame with several holes, the supplied frame must be removed.

Possibility to use a lightmodule for light around the dimmerknob in ELKO Plus version, delivered as accessory.

Technical specifications: Voltage: 230 V/50 Hz.
Load:
-Ohmic: 20-630W
-230V Halogen: 20-600W
-Electronic trafo: 20-630VA
Fuse: Electronic, Short circuit and temperature fuse
The dimmer will cutout in case of overload. The overload must be removed before the dimmer will function again.
Surface mounted box: 33mm
Operate:
-On/off: Push.
-Dim: Turn knob
Color: Polarwhite
Dimmer type: Trailing edge
Soft start
IP20
Depth in box: 29mm

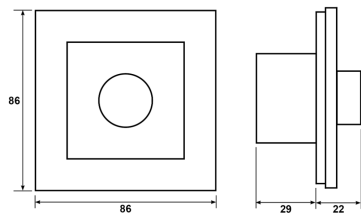
ELKO AS

E-mail: elko@elko.no
Internet: www.elko.no
Bank: 6219.05.15880
Org.no.: NO 911 382 563 MVA

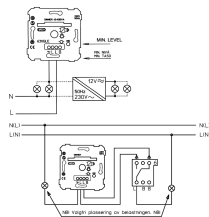
ELKO Front office
Sandstuveien 68, NO-0680 Oslo
P.O.Box 6598 Etterstad, NO-0607 Oslo
Tel.: +47 67 80 73 00
Fax: +47 67 80 73 01

ELKO Plant
Sporpind Industriområde, NO-3340 Åmot
Tel.: +47 32 78 91 00
Fax: +47 32 78 91 01

Size



Wiring diagram



ELKO AS

E-mail: elko@elko.no
Internet: www.elko.no
Bank: 6219.05.15880
Org.no.: NO 911 382 563 MVA

ELKO Front office
Sandstuveien 68, NO-0680 Oslo
P.O.Box 6598 Etterstad, NO-0607 Oslo
Tel.: +47 67 80 73 00
Fax: +47 67 80 73 01

ELKO Plant
Sporpind Industriområde, NO-3340 Åmot
Tel.: +47 32 78 91 00
Fax: +47 32 78 91 01