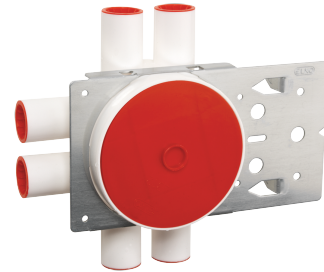




## Data Sheet 1223752

**Product:** 45/stender 6 LØP VB  
**El-number:** 1223752  
**Mat.no:** EKO05117  
**EAN:** 7020160511713  
**Packing:** 25  
**Color:** White



**Product description:** Flushmounted wallbox with bracket. The box has 6 conduit entries: 6x16 mm Ø, locking springs, sealing plugs and plastic lid is included. Possible to enter 20 mm Ø conduit by use of a 20 mm sleeve on the outside of the entries. The ready fixed box leaves a distance of 12 mm for wallplates. Different extension rings to build-up any difference between plate and box are available. Screw distance in-side the box: 60 mm cc.

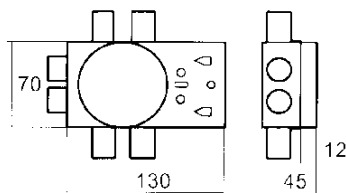
---

**Technical specifications:** Flush mounted wallbox with bracket.  
Depth: 45mm  
Standard: CEE Publ. 7, XIII.  
Halogenfree.  
Maximum temperature during casting prosess: 90°C  
Minimum installation temperature: -25°C  
Cuttersize: 73mm

---

Size

Wiring diagram



### ELKO AS

E-mail: [elko@elko.no](mailto:elko@elko.no)  
Internet: [www.elko.no](http://www.elko.no)  
Bank: 6219.05.15880  
Org.no.: NO 911 382 563 MVA

ELKO Front office  
Sandstuveien 68, NO-0680 Oslo  
P.O.Box 6598 Etterstad, NO-0607 Oslo  
Tel.: +47 67 80 73 00  
Fax: +47 67 80 73 01

ELKO Plant  
Sporpind Industrieråde, NO-3340 Åmot  
Tel.: +47 32 78 91 00  
Fax: +47 32 78 91 01